

2. Revise camera IP address

Note: Please do not revise here when you revising the camera ip address

We don't suggest you alter the ip address by yourself.

Local IP 192.168.20.86

DHCP

The software finds available network setting for the Ipcamera automatically. We suggest you just use it, you want to modify it manually

WIFI Settings

IP Address	192 . 168 . 20 . 87	Name	IPCAM
SubMask	255 . 255 . 255 . 0	User	admin
GateWay	192 . 168 . 20 . 1	Password	*****
Port	80		

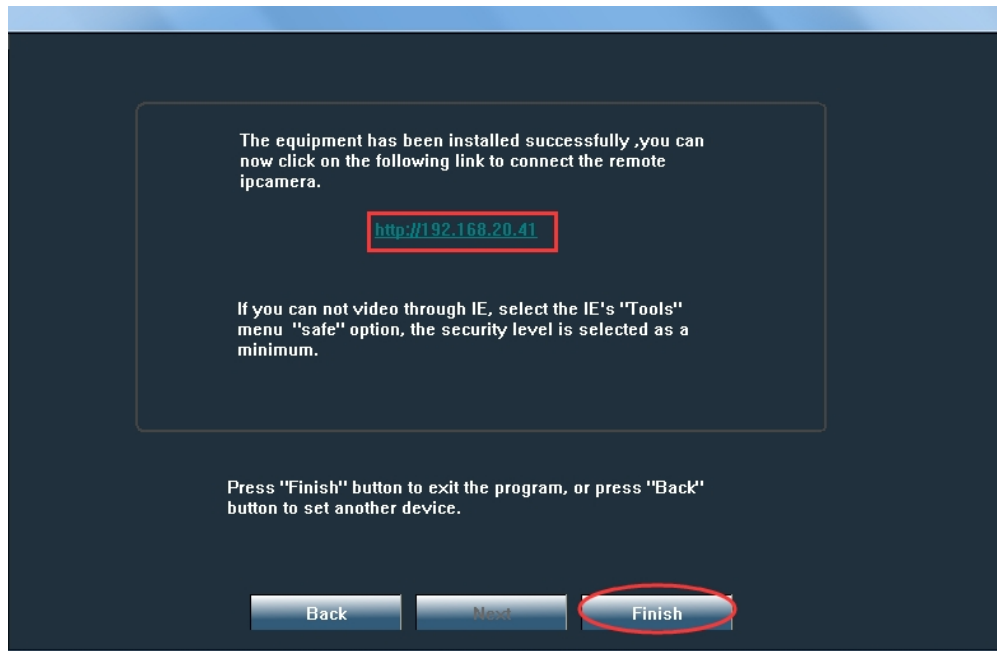
Pwd Reset

Please do not revise here when you revising the camera ip address

IP Address	192.168.20.41	Name	IPCAM
SubMask	255.255.255.0	Port	80
GateWay	192.168.20.1		
MAC Address	08:EA:40:78:7D:69	<input checked="" type="checkbox"/> DHCP	

Click Next to confirm the selected device, click Back to reselect the device

Back Next Cancel



3. WiFi settings

Click "wifi settings" button and click "Search WIFI" button to search for nearby WiFi as below

NO.	Wifi Name	Sig...	Secuty Type	Secury Mode	Channel
1	devele-LY	100	WPA2-PSK	AES	1
2	devele-LY	100	WPA2-PSK	AES	1
3	devele3	100	WPA-PSK	TKIP	6
4	devele1	100	WPA-PSK	TKIP	11
5	devele2	100	WPA-PSK	AES	11
6	TP-LINK CA16	89	WPA-PSK	AES	11
7	HUASHIWIFI	89	WPA2-PSK	TKIP	7
8	HUASHIWIFI	73	WPA2-PSK	TKIP	7
9	HUASHIWIFI	73	WPA2-PSK	TKIP	7
10	ChinaNet-N5td	68	WPA-PSK	TKIP	5
11	201888	68	WPA2-PSK	AES	6
12	111222	57	WPA2-PSK	AES	1
13	360維尊WiFi-II	57	WPA-PSK	AES	11

SSID: Safe Type: Security Mode:

Wifi Mode: Password: OnOff: