

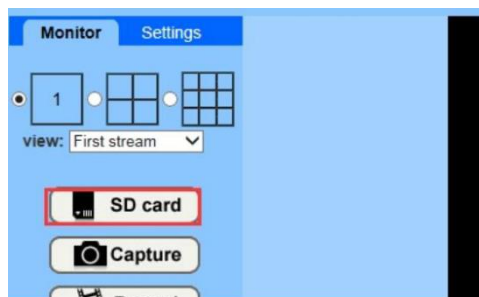
IE Browser- User Manual (For Windows PC)

The manual only introduce some special features of IE setting while the others are settings about parameter, which will not be illustrated here one by one. Any question, please feel free to contact us

For instructions of IE login, please refer to separate manual.

1, SD card video download

IE→SD Card

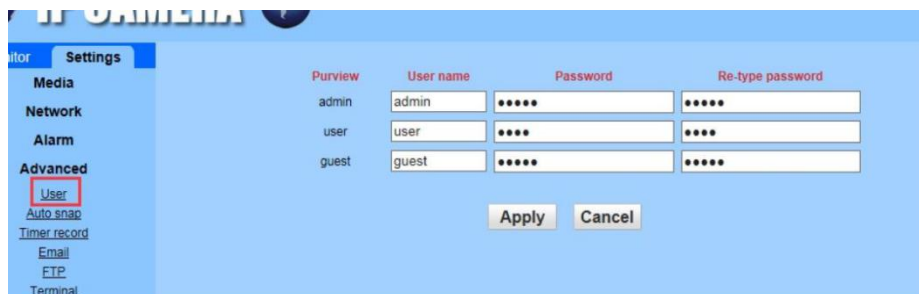


Index of /sd/20170907/record

<u>Name</u>	<u>Modified</u>	<u>Size</u>
Parent directory	-	-
A170907_154053_154107.264	07-Sep-2017 15:41	2.2M
A170907_154113_154127.264	07-Sep-2017 15:41	2.1M
A170907_154135_154149.264	07-Sep-2017 15:41	2.1M
A170907_154300_154314.264	07-Sep-2017 15:43	2.0M
A170907_154321_154335.264	07-Sep-2017 15:43	2.0M
A170907_154351_154405.264	07-Sep-2017 15:44	2.3M
A170907_154407_154421.264	07-Sep-2017 15:44	1.7M
A170907_154441_154455.264	07-Sep-2017 15:44	2.1M
A170907_154642_154656.264	07-Sep-2017 15:46	2.1M
A170907_154705_154719.264	07-Sep-2017 15:47	2.1M

2, Change the password (length within 31 characters:numbers,letters,and underline)

IE→Setting→Advanced→User

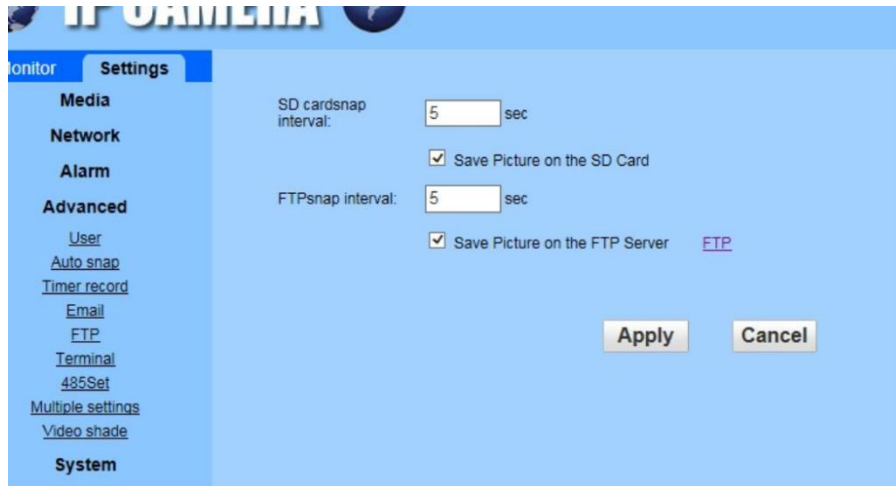


3,Picture upload automatically

Interval setting is 5 sec at least and 86400 sec at most.

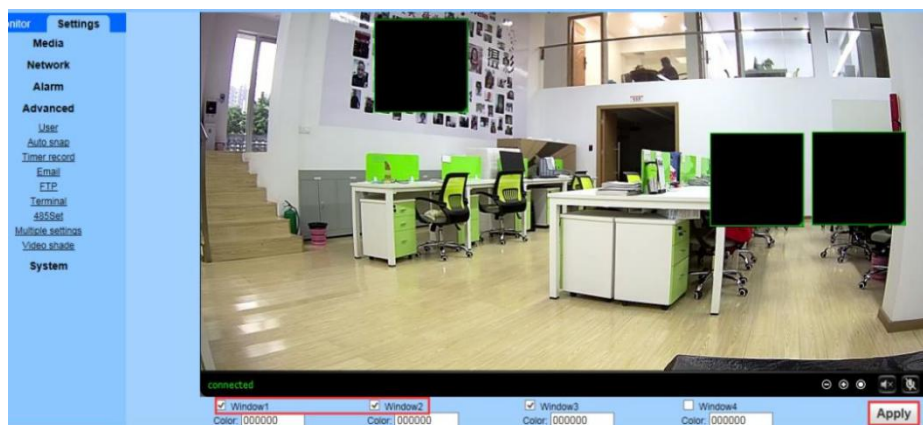
Note: Snapshot can not be seen on phone app. It is available on browser. Clicking the SD card on setting main page to download.

If you want to save picture on the FTP server, please set up FTP first, which is introduced carefully in FTP Setting Manual.



4. Video Shade: for this function, you can select to block half or whole screen.

IE→Setting→Advanced→Video shade



Check window 1 and a small frame appear,drag to select the detection range.

PS: Check window 2.3.4 to combine Shade areas freely