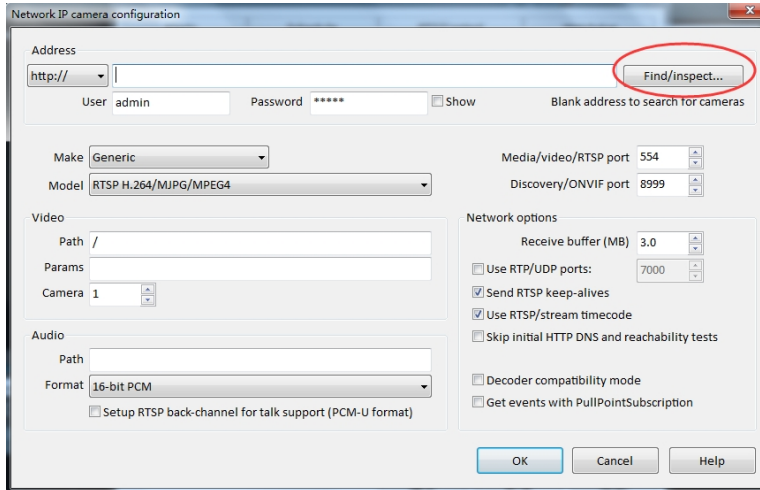


How to add POE camera to Blue Iris

1, Use "Http" and find camera within Lan



Network IP camera configuration

Address: Find/inspect...

User: Password: Show Blank address to search for cameras

Make: Media/video/RTSP port:

Model: Discovery/ONVIF port:

Video

Path:

Params:

Camera:

Audio

Path:

Format: Setup RTSP back-channel for talk support (PCM-U format)

Network options

Receive buffer (MB):

Use RTP/UDP ports:

Send RTSP keep-alives

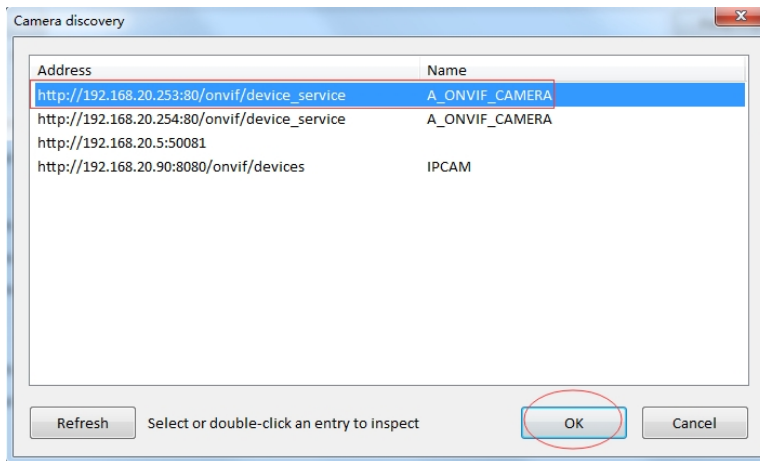
Use RTSP/stream timecode

Skip initial HTTP DNS and reachability tests

Decoder compatibility mode

Get events with PullPointSubscription

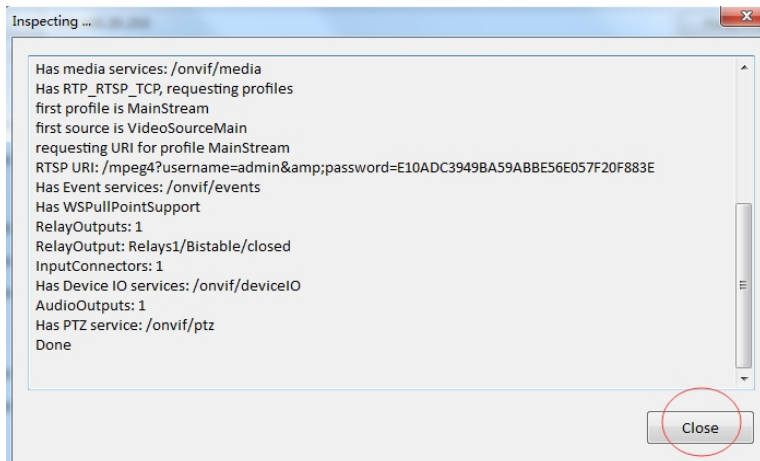
OK Cancel Help



Camera discovery

Address	Name
http://192.168.20.253:80/onvif/device_service	A_ONVIF_CAMERA
http://192.168.20.254:80/onvif/device_service	A_ONVIF_CAMERA
http://192.168.20.5:50081	
http://192.168.20.90:8080/onvif/devices	IPCAM

Refresh Select or double-click an entry to inspect OK Cancel



Inspecting ...

```
Has media services: /onvif/media
Has RTP_RTSP_TCP, requesting profiles
first profile is MainStream
first source is VideoSourceMain
requesting URI for profile MainStream
RTSP URI: /mpeg4?username=admin&password=E10ADC3949BA59ABBE56E057F20F883E
Has Event services: /onvif/events
Has WSPullPointSupport
RelayOutputs: 1
RelayOutput: Relays1/Bistable/closed
InputConnectors: 1
Has Device IO services: /onvif/deviceIO
AudioOutputs: 1
Has PTZ service: /onvif/ptz
Done
```

Close

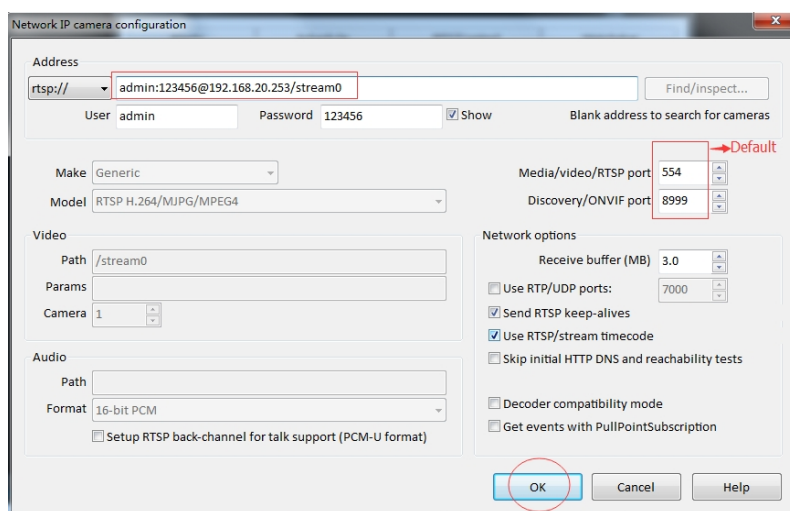
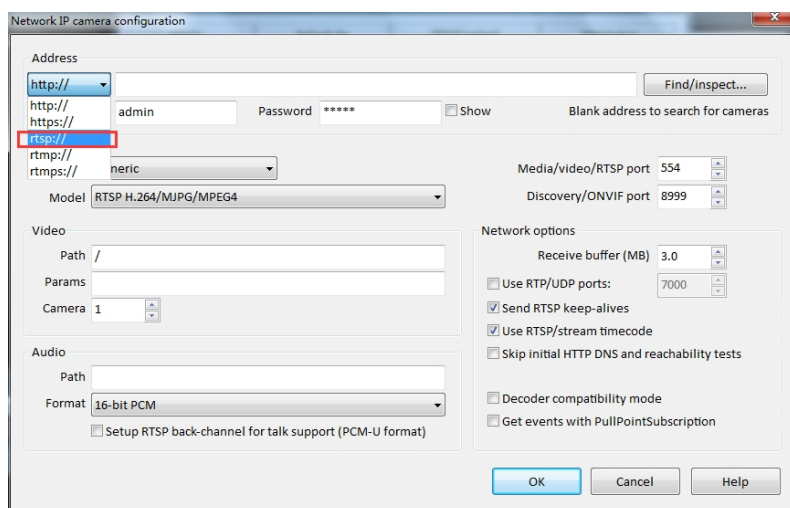
2, Use RTSP to add

RTSP data for poe camera as below:

1、 main stream : rtsp://username:password@x.x.x.x/stream0

2、 vice stream : rtsp://username:password@x.x.x.x/stream1

Just need to choose RTSP, and then input RTSP data, then click OK



Note: The password is the camera's login password, if you change camera password, here password must be consistent