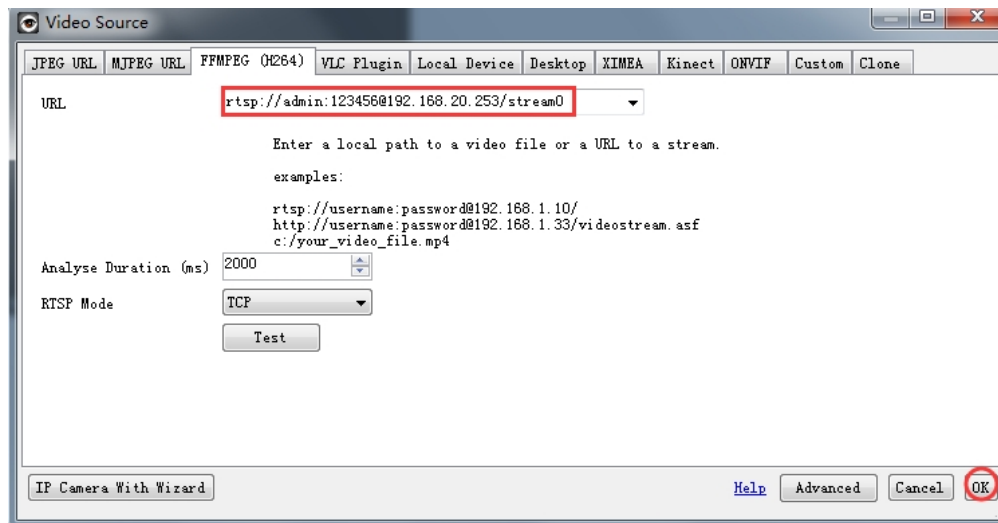


# How to add POE camera to Ispy

## 1,Use RTSP to add

- 1、 main stream: `rtsp://username:password@x.x.x.x/stream0`
- 2、 vice stream: `rtsp://username:password@x.x.x.x/stream1`

Find “FFMPEG (H264)” this column, fill in information of RTSP in the URL.After adding can test test is successful



Note: The password is the camera's login password, if you change camera password, here password must be consistent

Edit Camera (ID: 1, DIR: ENKDF)

Camera | Motion Detection | Alerts | Recording | PTZ | Images | FTP | Cloud Storage | Scheduling | Storage

Video Source

Source

Name

Groups  [Help](#)

Camera Active  Fill

Transform

Timestamp

Mask Image

Picture In Picture

Maximum Framerate  When Recording

Microphone

Microphone  None [Help](#)

Ignore Audio

Talk

Camera Model  [Settings](#)

IP Address  Port

Username  Password

Exit this to enable alerts and recording

[Copy To](#) [Help](#)