

How to add POE camera to Blue Iris(H264)

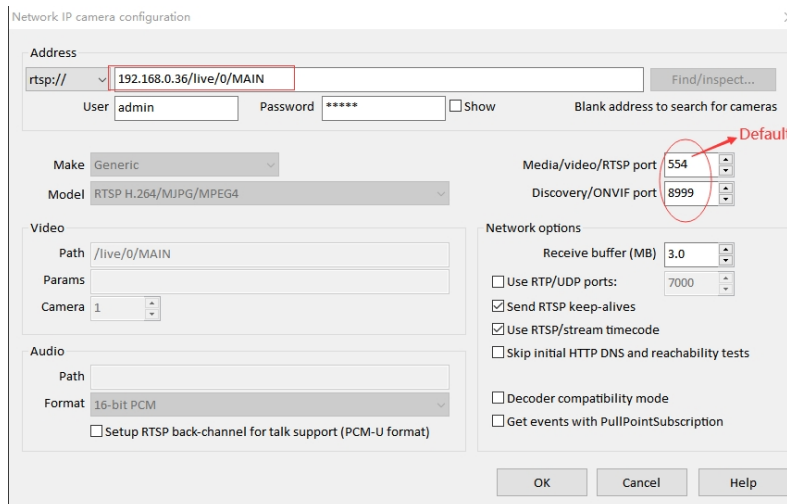
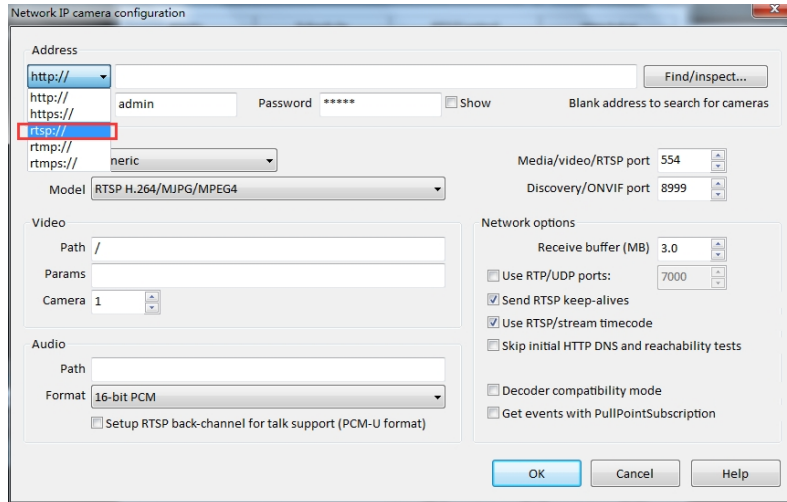
1, Use RTSP to add

RTSP data for poe camera as below:

1、 main stream： rtsp://ip address:554/live/0/MAIN

2、 vice stream： rtsp://ip address:554/live/0/SUB

Just need to choose RTSP, and then input RTSP data, then click OK



Note: The password is the camera's login password, if you change camera password, here password must be consistent