

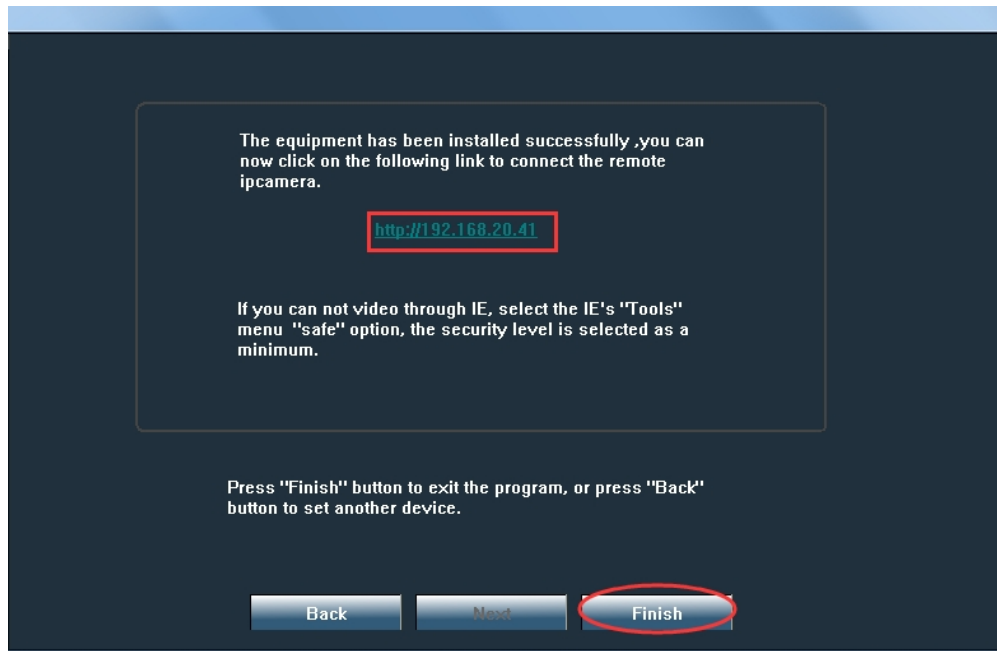
2. Revise camera IP address

Note: Please do not revise here when you revising the camera ip address

We don't suggest you alter the ip address by yourself.

The screenshot shows a camera configuration interface with two main sections. The top section is titled 'Local IP 192.168.20.86' and includes a 'WIFI Settings' button. It features a 'DHCP' checkbox which is checked and circled in red. A red arrow points from this checkbox to a text box that reads: 'The software finds available network setting for the lpcamera automatically. We suggest you just use it, you want to modify it manually'. Below this, there are input fields for 'IP Address' (192 . 168 . 20 . 87), 'SubMask' (255 . 255 . 255 . 0), 'GateWay' (192 . 168 . 20 . 1), and 'Port' (80). The '20' in the IP address and the '20' in the GateWay are also circled in red. A red arrow points from the '20' in the GateWay to a red text box that says 'Please do not revise here when you revising the camera ip address'. To the right of these fields are 'Name' (IPCAM), 'User' (admin), and 'Password' (*****). A 'Pwd Reset' button is located at the bottom right of this section. The bottom section contains fields for 'IP Address' (192.168.20.41), 'SubMask' (255.255.255.0), 'GateWay' (192.168.20.1), and 'MAC Address' (08:EA:40:78:7D:69). It also has a 'Name' (IPCAM) field, a 'Port' (80) field, and a checked 'DCHP' checkbox. At the bottom of the interface, there are three buttons: 'Back', 'Next' (circled in red), and 'Cancel'. A line of text above these buttons reads: 'Click Next to confirm the selected device, click Back to reselect the device'.

Local IP	192.168.20.86	The software finds available network setting for the lpcamera automatically. We suggest you just use it, you want to modify it manually		WIFI Settings
<input checked="" type="checkbox"/> DHCP				
IP Address	192 . 168 . 20 . 87	Name	IPCAM	
SubMask	255 . 255 . 255 . 0	User	admin	
GateWay	192 . 168 . 20 . 1	Password	*****	
Port	80		Pwd Reset	
Please do not revise here when you revising the camera ip address				
IP Address	192.168.20.41	Name	IPCAM	
SubMask	255.255.255.0	Port	80	
GateWay	192.168.20.1	<input checked="" type="checkbox"/> DCHP		
MAC Address	08:EA:40:78:7D:69			
Click Next to confirm the selected device, click Back to reselect the device				
Back	Next	Cancel		



3. WiFi settings

Click "wifi settings" button and click "Search WIFI" button to search for nearby WiFi as below

NO.	Wifi Name	Sig...	Secuty Type	Secury Mode	Channel
1	devele-LY	100	WPA2-PSK	AES	1
2	devele-LY	100	WPA2-PSK	AES	1
3	devele3	100	WPA-PSK	TKIP	6
4	devele1	100	WPA-PSK	TKIP	11
5	devele2	100	WPA-PSK	AES	11
6	TP-LINK CA16	89	WPA-PSK	AES	11
7	HUASHIWIFI	89	WPA2-PSK	TKIP	7
8	HUASHIWIFI	73	WPA2-PSK	TKIP	7
9	HUASHIWIFI	73	WPA2-PSK	TKIP	7
10	ChinaNet-N5td	68	WPA-PSK	TKIP	5
11	201888	68	WPA2-PSK	AES	6
12	111222	57	WPA2-PSK	AES	1
13	360 綠 野 垂 WiFi-II	57	WPA-PSK	AES	11

SSID: Safe Type: Security Mode:

Wifi Mode: Password: OnOff: